

INTELLIGENT FOOD PLANNING: ENABLING EFFECTIVE MANAGEMENT IN FOOD PRODUCTION

Planning food production is complex due to the sheer number of puzzles that must be solved to produce a plan, such as:

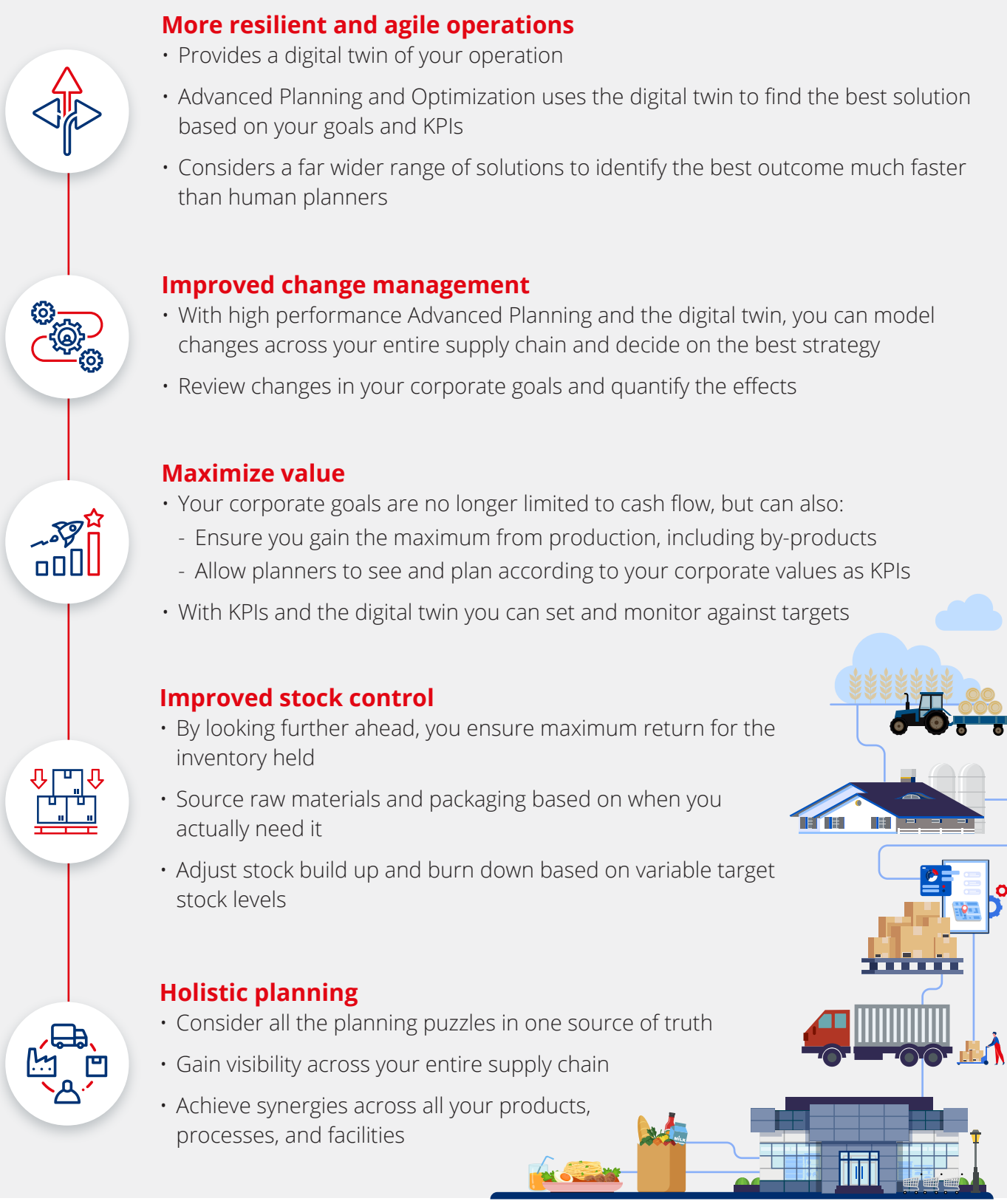


When your plan has to be produced in a limited amount of time, you may feel the need to simplify the overall puzzle you are solving. Planning each puzzle individually or separately per planning horizon can be risky, and you may potentially incur additional costs if you do not consider all the options within a single planning solution. A good plan should be holistic and consider product changes, equipment changes, and maintenance alongside disruption, with the puzzles all solved together in a single plan looking across a planning horizon of days, weeks, months, or even years.

What if there was a way of processing all the billions of planning decisions quickly and consistently? What if you could look ahead at how customer demand, or product and process changes will affect your operations? Imagine the opportunities... This is what we call Intelligent Food Planning.

Food manufacturers constantly deal with constraints, balancing stocks, and choosing the best recipe to ensure they can meet customer demands. With **Intelligent Food Planning**, your business will gain the agility to navigate disruptions and increased interdependencies while mitigating rising costs.

5 KEY BENEFITS OF INTELLIGENT FOOD PLANNING



Intelligent Food Planning not only produces your plan, but also supports your planners when they make changes, instantly updating all KPIs, capacities, and stock levels across your supply chain while preventing unexpected knock-on effects.

Ready to Get Started?

With qualified planning experts from The Logic Factory and DELMIA Quintiq's cutting-edge technology, Intelligent Food Planning helps food manufacturers to streamline complex planning decisions to gain a competitive edge in the food industry.

If you're interested to know more, get in touch with us:

info@thelogicfactory.com

