

ROLL INTO SUCCESS: SMARTER COLD ROLLING SCHEDULING FOR MORE OUTPUT

Cold rolling is all about precision - tight tolerances, smooth finishes, and seamless scheduling to keep production running at peak efficiency. But staying ahead isn't easy. Between tight deadlines, fluctuating order priorities, and the constant balancing act of resource utilization, schedulers have their hands full.

The challenge? Maximizing output while keeping costs in check. You already know that downtime, setup delays, and energy inefficiencies can eat into margins fast. The key is a scheduling approach that works with you, not against you - one that helps you keep machines running, reduces unnecessary stops, and gets more tons through the mill.

THE SCHEDULING CHALLENGES YOU FACE EVERY DAY

Every shift brings new variables - last-minute order changes, machine maintenance, or a sequence that doesn't quite line up. You need a schedule that keeps up, minimizing disruptions and making the most of every available minute. But when production demands and operational constraints pull in different directions, finding that balance isn't easy.



Keeping Production Reliable:

Sticking to allowed transitions, avoiding quality risks, and reducing unexpected breakdowns is all part of the game. But when the plan gets disrupted, adjusting on the fly without throwing everything off is easier said than done.



Minimizing Setup Time:

The less time spent changing over between batches, the better. But ensuring smooth transitions while managing different alloys, thicknesses, and finish requirements takes real skill.



Aligning Resources and Output:

Every machine, every operator, every slab needs to be used efficiently. Wasted capacity means lost output, and nobody has time for that.



Balancing Energy Consumption:

Power costs add up fast and optimizing when and how materials are processed can make a big difference. Getting the most out of each batch while keeping consumption in check isn't just smart - it's necessary.



Navigating Demand Shifts:

Customers expect on-time delivery, no matter how unpredictable demand gets. Adjusting the schedule without missing due dates is part of the job, but it's never simple.



YOUR MILL, YOUR EXPERTISE - BACKED BY THE RIGHT SUPPORT

Cold rolling schedulers know their plant inside and out. But even the best schedulers don't have time to manually tweak every sequence, handle every disruption, or constantly recalculate the best path forward. A smart scheduling solution doesn't replace expertise - it amplifies it by automating the tedious work and giving you the flexibility to focus on what really matters:

- 1 Maximize Output:** Make every second count. Use real-time data to optimize processes, reduce bottlenecks, and get the most out of your mill's capacity.
- 2 Optimize Resource Utilization:** With up-to-the-minute inventory and machine data, you'll know exactly how to allocate materials and manpower for peak efficiency.
- 3 Reduce Downtime and Costs:** Smart sequencing and batching reduce idle time, cut unnecessary stops, and help control operational costs.
- 4 Optimize Every Step:** From material flow to rolling programs to sequencing, keep everything running in sync to hit production goals without the guesswork.

What if your scheduling tools didn't just follow orders, but actually worked alongside you? Instead of replacing your expertise, imagine a system built to enhance it - one that understands the complexities of your mill and adapts to the way you work. Today's advanced scheduling solutions do just that. They're not just algorithms; they can be shaped by the deep knowledge and experience within your organization, ensuring your schedules are smarter, more efficient, and always aligned with real-world production needs - without making your day more complex.

HOW THE LOGIC FACTORY'S COLD ROLLING SCHEDULING SOLUTION HELPS YOU TAKE CONTROL

Actionable Insights

Track key metrics across the entire rolling process. Whether it's one change or the cumulative impact of multiple decisions, see how each move affects the bigger picture.

End-to-End Visibility

With a single source of truth, you can see the impact of every decision across production, making it easier to stay ahead of disruptions and align with business goals.

Adaptable Scheduling

Plans change. Orders shift. Machines go down. A scheduling solution that adapts in real-time to accommodate disruptions, helping you keep production moving without spending hours fixing the schedule.

Output-Driven Planning

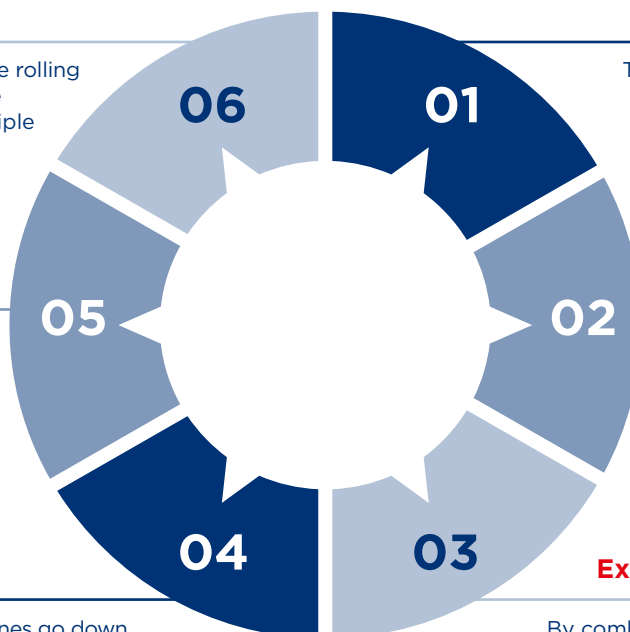
Tons first - always. The system works with you to make sure machines are fully utilized, setups are minimized, and no opportunity for more output is left on the table.

Optimized Setup and Sequencing

Smart scheduling accounts for various lead times, processing times, and setup times between operations. By grouping similar materials together, you minimize changeovers and keep the mill running without unnecessary stops.

Experience-Driven Technology

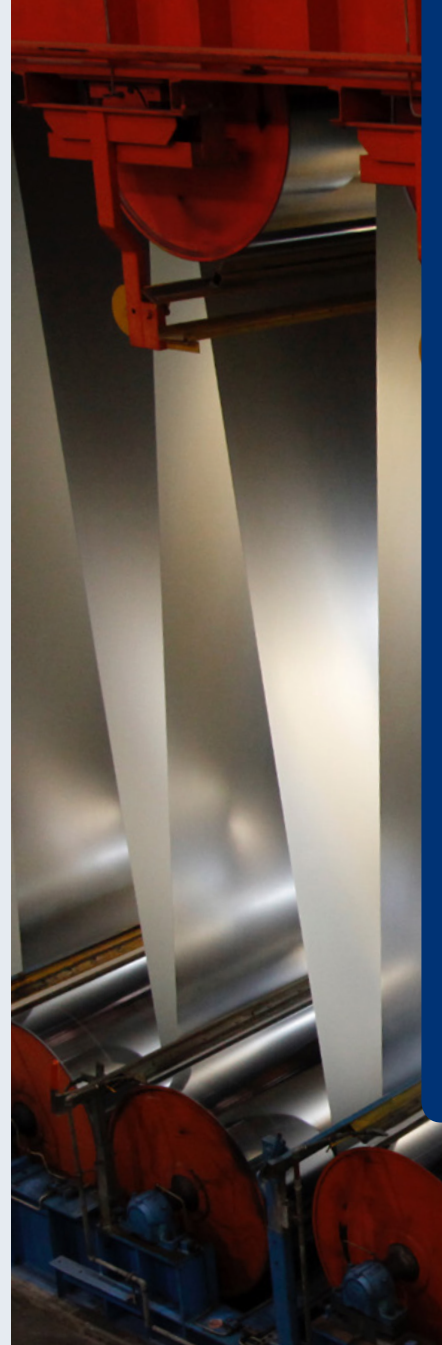
By combining your expertise with advanced technology, the system adapts and learns from your decisions. This helps ensure consistency and supports less experienced operators to make more informed choices.



KEY BENEFITS OF THE LOGIC FACTORY'S COLD ROLLING SCHEDULING SOLUTION

- 1 Optimize Every Step:**
From start to finish, streamline every phase of production. Whether it's batching, sequencing, or material allocation, stay on track and produce more tons in less time.
- 2 Boost output:**
Leverage real-time data to make informed decisions that optimize processes, reduce bottlenecks, and maximize output.
- 3 Reduce Downtime:**
Smart sequencing and resource allocation help you reduce downtime and make the most of your equipment, minimizing time and costs.
- 4 Decision Support and Actionable Insights:**
Configurable sequencing and program rules mean that you have what you need to make the best decisions. From start to finish, track and analyze the metrics that matter most and see how each decision impacts the bigger picture.
- 5 What if Scenarios:**
Evaluate multiple scenarios and adapt to changing conditions without missing a beat. The solution ensures you're always ready for whatever comes your way.

Stay agile and adapt without missing a beat to ensure you can adjust when and what you need to stay ahead of the curve.



Why The Logic Factory? | Real World Impact

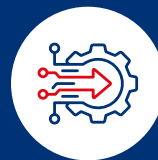
Our solutions work with you and fit the specific needs of your plant. By integrating your knowledge and expertise in the system, you get a tool that respects what you know and provides the decision-support that really helps you handle the complexity of scheduling hot rolling. We've worked with mills just like yours to optimize scheduling, so you can focus on the big picture: getting more tons produced, faster.



Proven track record



Fast implementation methodology



Robust integration



24/7 global support

Optimizing your production scheduling doesn't need to be a solo effort. Together, we can forge a path through uncertainty. We're just a call away.